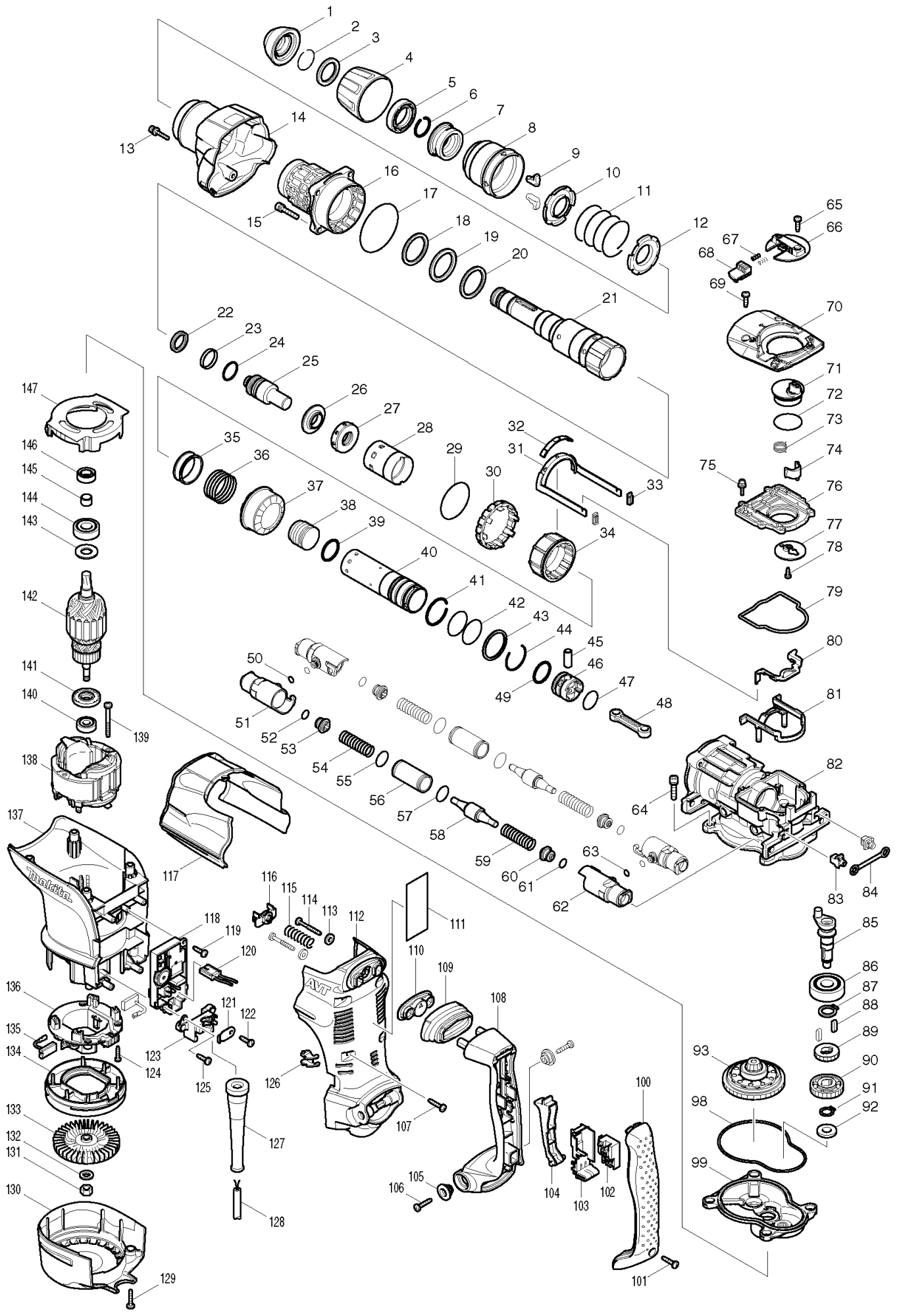


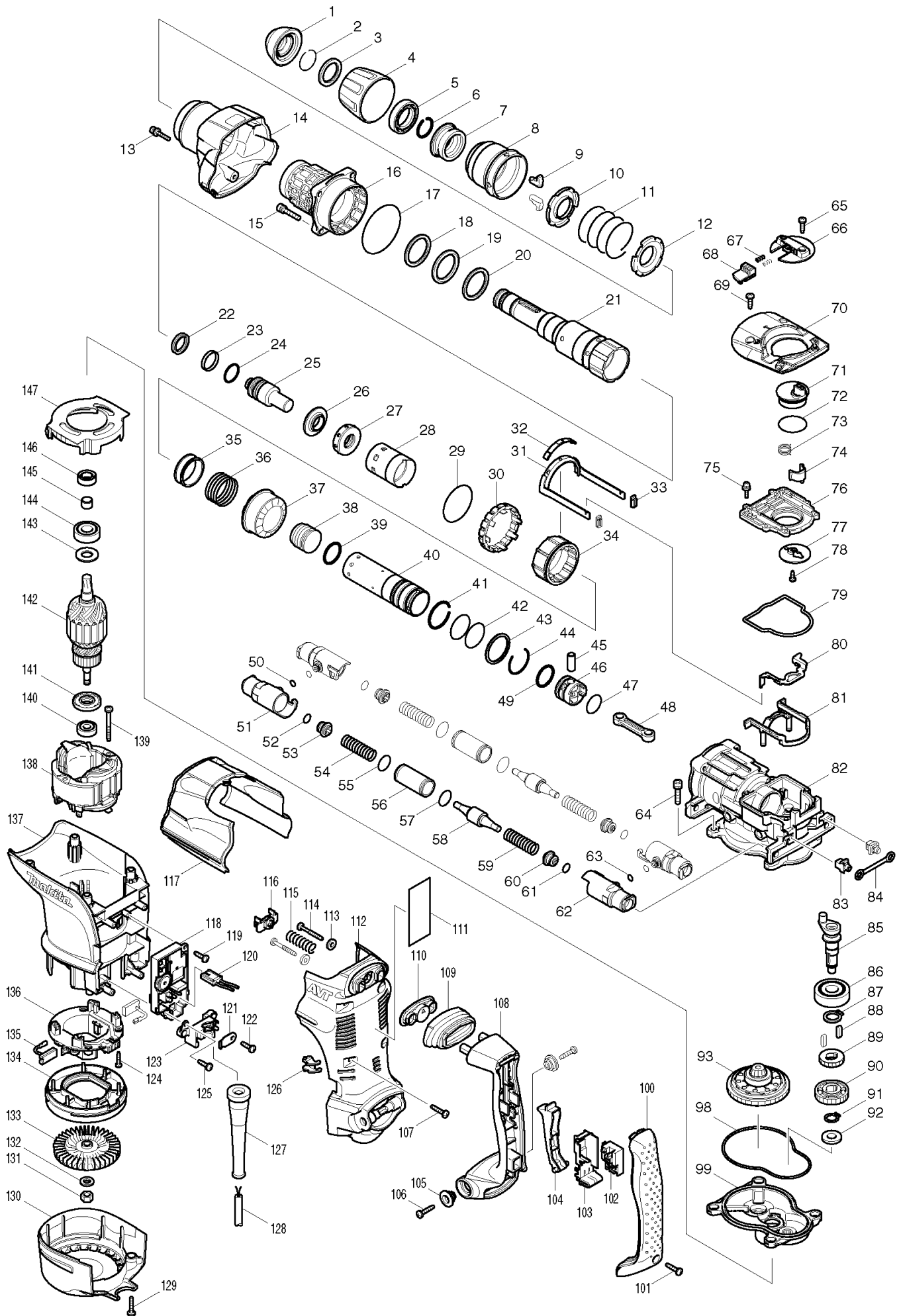
Skissritning för HR4511C - Kombihammare



Nr.	Art nr.	Namn
1	286285-4	TOOL HOLDER CAP
2	233948-3	RING SPRING 25
3	257280-1	RING 28
4	450064-8	CHUCK COVER
5	419002-9	SPACER
6	233948-3	RING SPRING 25
7	324752-2	CHUCK RING
8	450030-5	RELEASE COVER
9	310178-4	TOOL RETAINER
10	345804-6	SPRING GUIDE
11	233496-2	COMPRESSION SPRING 49
12	345804-6	SPRING GUIDE
13	922148-7	HEX. SOCKET HEAD BOLT M4X25
14	158300-3	BARREL COVER COMPLETE
15	922353-6	HEX.SOCKET HEAD BOLT M6X30
16	158576-2	BARREL COMPLETE
17	213754-2	O RING 71
18	267357-4	FLAT WASHER 36
19	262135-7	RUBBER RING 36
20	267357-4	FLAT WASHER 36
21	324872-2	TOOL HOLDER
22	213980-3	X-RING 21
23	213431-6	FLUORIDE RING 28
24	213394-6	O RING 23
25	324802-3	IMPACT BOLT
26	324805-7	RING 19
27	424032-7	RUBBER RING 20
28	450024-0	SLIDE SLEEVE
29	213656-2	O RING 53
30	450031-3	LOCK SLEEVE
31	165465-4	LINK ARM
32	450032-1	LINK ARM GUIDE
33	424024-6	SEAL PLATE
34	324800-7	DRIVING SLEEVE
35	331599-7	RING 38
36	234024-6	COMPRESSION SPRING 39
37	227526-9	STRAIGHT BEVEL GEAR 35
38	324804-9	STRIKER
39	213981-1	O-RING 27
40	324803-1	CYLINDER 34
41	233956-4	RING SPRING 37
42	213460-9	O RING 35
43	257283-5	RING 38
44	233955-6	RING SPRING 36
45	331598-9	PIPE 10
46	450025-8	PISTON
47	213407-3	O RING 26
48	450026-6	CONECTING ROD

49	213981-1	O-RING 27
50	213030-4	O RING 8
51	318169-9	PIPE HOLDER
52	213118-0	O RING 12
53	450027-4	SPRING GUIDE
54	234023-8	COMPRESSION SPRING 14
55	213373-4	O RING 22
56	331778-7	PIPE 20
57	213373-4	O RING 22
58	324806-5	COUNTER WEIGHT
59	234023-8	COMPRESSION SPRING 14
60	450027-4	SPRING GUIDE
61	213118-0	O RING 12
62	318169-9	PIPE HOLDER
63	213030-4	O RING 8
64	922353-6	HEX.SOCKET HEAD BOLT M6X30
65	266192-7	TAPPING SCREW 4X14
66	419020-7	CHANGE LEVER
67	233436-0	COMPRESSION SPRING 3
68	419009-5	LOCK BUTTON
69	266192-7	TAPPING SCREW 4X14
70	318170-4	CRANK CAP COVER
71	450687-2	CRANK LEVER
72	213534-6	O RING 36
73	233506-5	TORSION SPRING 16
74	310207-3	LINK LEVER
75	911133-5	PAN HEAD SCREW M4X18
76	450034-7	CRANK CAP
77	345778-1	RETAINER PLATE
78	265014-8	+ PAN HEAD SCREW M4X12
79	424034-3	SEAL RING
80	345822-4	LINK PLATE
81	450029-0	LINK PLATE GUIDE
82	158297-6	CRANK HOUSING COMPLETE
83	419008-7	FIX GUIDE
84	423345-3	CUSHION PLATE
85	324801-5	CRANK SHAFT
86	211279-0	BALL BEARING 6303LLU
87	961057-5	RETAINING RING S-17
88	254220-0	KEY 5
89	227181-7	SPUR GEAR 19
90	226655-5	HELICAL GEAR 36
91	961054-1	RETAINING RING S-14
92	253180-3	FLAT WASHER 10
93	125415-1	TORQUE LIMITER ASS'Y
98	424033-5	SEAL RING
99	158299-2	GEAR HOUSING COMPLETE
100	419796-6	HANDLE COVER
101	265995-6	TAPPING SCREW 4X18

102	650567-4	SWITCH TG73B-1
103	154626-1	SWITCH HOLDER COMPLETE
104	419025-7	SWITCH LEVER
105	313124-6	SHOULDER SLEEVE 6
106	266041-8	TAPPING SCREW 5X25
107	266041-8	TAPPING SCREW 5X25
108	419798-2	HANDLE
109	424035-1	DUST COVER
110	450028-2	DUST COVER SUPPORT
111	864096-3	HR4511C NAME PLATE
112	450038-9	HANDLE BASE
113	253807-5	FLAT WASHER 5
114	266211-9	TAPPING SCREW 5X40
115	233434-4	COMPRESSION SPRING 11
116	419013-4	SPRING GUIDE
117	450036-3	CRANK HOUSING COVER
118	631751-0	CONTROLLER
119	266192-7	TAPPING SCREW 4X14
120	638510-3	LEAD UNIT
121	687169-3	STRAIN RELIEF
122	266192-7	TAPPING SCREW 4X14
123	419024-9	CORD CLAMP BASE
124	265995-6	TAPPING SCREW 4X18
125	266192-7	TAPPING SCREW 4X14
126	419774-6	LENS
127	682560-0	CORD GUARD 10
128	695123-3	POWER SUPPLY CORD 1.5-2-4.0
129	266041-8	TAPPING SCREW 5X25
130	450035-5	REAR COVER
131	252178-7	HEX. NUT M8-12
132	253165-9	FLAT WASHER 8
133	240016-5	FAN 90
134	419782-7	FAN GUIDE
135	194412-8	Hillet CB-171
136	638447-4	BRUSH HOLDER UNIT
137	450041-0	MOTOR HOUSING
138	636313-9	FIELD 220-240V
139	266046-8	TAPPING SCREW 5X50
140	210059-1	BALL BEARING 6000DDW
141	681642-5	INSULATION WASHER
142	517768-6	ARMATURE ASS'Y 220-240V
143	267025-9	FLAT WASHER 15
144	211238-4	BALL BEARING 6202LLU
145	331596-3	SLEEVE 12
146	213231-4	OIL SEAL 15
147	450033-9	BAFFLE PLATE



Nr.	Art nr.	Namn
1	286285-4	TOOL HOLDER CAP
2	233948-3	RING SPRING 25
3	257280-1	RING 28
4	450064-8	CHUCK COVER
5	419002-9	SPACER
6	233948-3	RING SPRING 25
7	324752-2	CHUCK RING
8	450030-5	RELEASE COVER
9	310178-4	TOOL RETAINER
10	345804-6	SPRING GUIDE
11	233496-2	COMPRESSION SPRING 49
12	345804-6	SPRING GUIDE
13	922148-7	HEX. SOCKET HEAD BOLT M4X25
14	158300-3	BARREL COVER COMPLETE
15	922353-6	HEX.SOCKET HEAD BOLT M6X30
16	158576-2	BARREL COMPLETE
17	213754-2	O RING 71
18	267357-4	FLAT WASHER 36
19	262135-7	RUBBER RING 36
20	267357-4	FLAT WASHER 36
21	324872-2	TOOL HOLDER
22	213980-3	X-RING 21
23	213431-6	FLUORIDE RING 28
24	213394-6	O RING 23
25	324802-3	IMPACT BOLT
26	324805-7	RING 19
27	424032-7	RUBBER RING 20
28	450024-0	SLIDE SLEEVE
29	213656-2	O RING 53
30	450031-3	LOCK SLEEVE
31	165465-4	LINK ARM
32	450032-1	LINK ARM GUIDE
33	424024-6	SEAL PLATE
34	324800-7	DRIVING SLEEVE
35	331599-7	RING 38
36	234024-6	COMPRESSION SPRING 39
37	227526-9	STRAIGHT BEVEL GEAR 35
38	324804-9	STRIKER
39	213981-1	O-RING 27
40	324803-1	CYLINDER 34
41	233956-4	RING SPRING 37
42	213460-9	O RING 35
43	257283-5	RING 38
44	233955-6	RING SPRING 36
45	331598-9	PIPE 10
46	450025-8	PISTON
47	213407-3	O RING 26
48	450026-6	CONECTING ROD

49	213981-1	O-RING 27
50	213030-4	O RING 8
51	318169-9	PIPE HOLDER
52	213118-0	O RING 12
53	450027-4	SPRING GUIDE
54	234023-8	COMPRESSION SPRING 14
55	213373-4	O RING 22
56	331778-7	PIPE 20
57	213373-4	O RING 22
58	324806-5	COUNTER WEIGHT
59	234023-8	COMPRESSION SPRING 14
60	450027-4	SPRING GUIDE
61	213118-0	O RING 12
62	318169-9	PIPE HOLDER
63	213030-4	O RING 8
64	922353-6	HEX.SOCKET HEAD BOLT M6X30
65	266192-7	TAPPING SCREW 4X14
66	419020-7	CHANGE LEVER
67	233436-0	COMPRESSION SPRING 3
68	419009-5	LOCK BUTTON
69	266192-7	TAPPING SCREW 4X14
70	318170-4	CRANK CAP COVER
71	450687-2	CRANK LEVER
72	213687-1	O RING 36
73	233506-5	TORSION SPRING 16
74	310207-3	LINK LEVER
75	911133-5	PAN HEAD SCREW M4X18
76	450034-7	CRANK CAP
77	345778-1	RETAINER PLATE
78	265014-8	+ PAN HEAD SCREW M4X12
79	424034-3	SEAL RING
80	345822-4	LINK PLATE
81	450029-0	LINK PLATE GUIDE
82	158297-6	CRANK HOUSING COMPLETE
83	419008-7	FIX GUIDE
84	423345-3	CUSHION PLATE
85	324801-5	CRANK SHAFT
86	211279-0	BALL BEARING 6303LLU
87	961057-5	RETAINING RING S-17
88	254220-0	KEY 5
89	227181-7	SPUR GEAR 19
90	226655-5	HELICAL GEAR 36
91	961054-1	RETAINING RING S-14
92	253180-3	FLAT WASHER 10
93	125415-1	TORQUE LIMITER ASS'Y
98	424033-5	SEAL RING
99	158299-2	GEAR HOUSING COMPLETE
100	419796-6	HANDLE COVER
101	265995-6	TAPPING SCREW 4X18

102	650567-4	SWITCH TG73B-1
103	154626-1	SWITCH HOLDER COMPLETE
104	419025-7	SWITCH LEVER
105	313124-6	SHOULDER SLEEVE 6
106	266041-8	TAPPING SCREW 5X25
107	266041-8	TAPPING SCREW 5X25
108	419798-2	HANDLE
109	424035-1	DUST COVER
110	450028-2	DUST COVER SUPPORT
111	864096-3	HR4511C NAME PLATE
112	450038-9	HANDLE BASE
113	253807-5	FLAT WASHER 5
114	266211-9	TAPPING SCREW 5X40
115	233434-4	COMPRESSION SPRING 11
116	419013-4	SPRING GUIDE
117	450036-3	CRANK HOUSING COVER
118	631751-0	CONTROLLER
119	266192-7	TAPPING SCREW 4X14
120	638510-3	LEAD UNIT
121	687169-3	STRAIN RELIEF
122	266192-7	TAPPING SCREW 4X14
123	419024-9	CORD CLAMP BASE
124	265995-6	TAPPING SCREW 4X18
125	266192-7	TAPPING SCREW 4X14
126	419774-6	LENS
127	682560-0	CORD GUARD 10
128	695123-3	POWER SUPPLY CORD 1.5-2-4.0
129	266041-8	TAPPING SCREW 5X25
130	450035-5	REAR COVER
131	252178-7	HEX. NUT M8-12
132	253165-9	FLAT WASHER 8
133	240016-5	FAN 90
134	419782-7	FAN GUIDE
135	195844-2	CARBON BRUSH CB-175
136	638447-4	BRUSH HOLDER UNIT
137	450041-0	MOTOR HOUSING
138	636313-9	FIELD 220-240V
139	266046-8	TAPPING SCREW 5X50
140	210059-1	BALL BEARING 6000DDW
141	681642-5	INSULATION WASHER
142	517768-6	ARMATURE ASS'Y 220-240V
143	267025-9	FLAT WASHER 15
144	211238-4	BALL BEARING 6202LLU
145	331596-3	SLEEVE 12
146	213231-4	OIL SEAL 15
147	450033-9	BAFFLE PLATE